



16D13N

ROYAL PRINCESS ALASKA CRUISE + CANADIAN ROCKIES PREMIUM TOUR (2N BANFF)

16天13晚阿拉斯加皇家公主号及加拿大洛基山脉豪华游（2晚班夫）

Tour Code: GPRC-UAC



PRINCESS
ROYAL PRINCESS®
皇家公主号®



USA



CANADA



Why GD Fly Cruise?

为何选择 GD 飞航游轮?



Diverse Destinations 多样目的地

Cruises offer a variety of routes and destination choices, to explore more places.
邮轮提供多样航线和目的地，让旅客探索多个目的地。



Convenience 便捷性

One-time boarding procedures make it easy to leisurely cruise through multiple destinations, eliminating the hassle of frequent accommodation changes.
只需办理一次登船手续，便轻松畅游多个目的地，免去频繁更换住宿的烦恼。



Comprehensive Services 全方位服务

Offer comfortable accommodations. Passengers can enjoy resort-like services on the cruise without the need for frequent accommodation changes.
提供舒适住宿、丰富餐饮、娱乐活动和各种设施，享受度假服务。



Comfortable Transportation and Various Entertainment 舒适的交通方式

Offer comfortable transportation for passengers to enjoy scenic views and diverse entertainment like performances, concerts, casinos, and water facilities, avoiding the discomfort of long drives or flights.
免受长时间驾驶或飞行的疲劳，惬意欣赏迷人景色与体验多彩娱乐活动。



Suitable for All Ages 适合各年龄段

Cruise travel is suitable for passengers of all ages, with diverse facilities and activities catering to the interests and needs of different demographics.
邮轮旅行适合各年龄段旅客，多样的设施活动满足了不同人群的兴趣和需求。



Professional Tour Manager 专业旅游经理

Our Experience and Professional Tour manager ensure a hassle free and memorable dream holidays.
我们经验丰富的专业旅游经理确保您度过一个无忧无虑、且充满回忆的假期。

TOUR HIGHLIGHTS 行程亮点

PRINCESS PRINCESS PLUS PACKAGE 公主号PLUS配套

- ✓ WIFI (1 Device per guest) 无线上网 (每位客人一架)
- ✓ Plus Beverage Package (All drinks up to \$15 each) 饮料升级配套 (全部饮料高达 15美元)
- ✓ Unlimited Juice Bar 无限畅饮果汁吧台
- ✓ Premium Desserts (2 per day) 精致甜点 (每天两份)
- ✓ Fitness Class (2 per cruise) 健身课程 (两次/航行)
- ✓ Casual Dining Experience (2 per cruise) 休闲餐厅体验 (两次/航行)
- ✓ Room Service Delivery 舱房送餐服务



ROYAL PRINCESS® 皇家公主号®

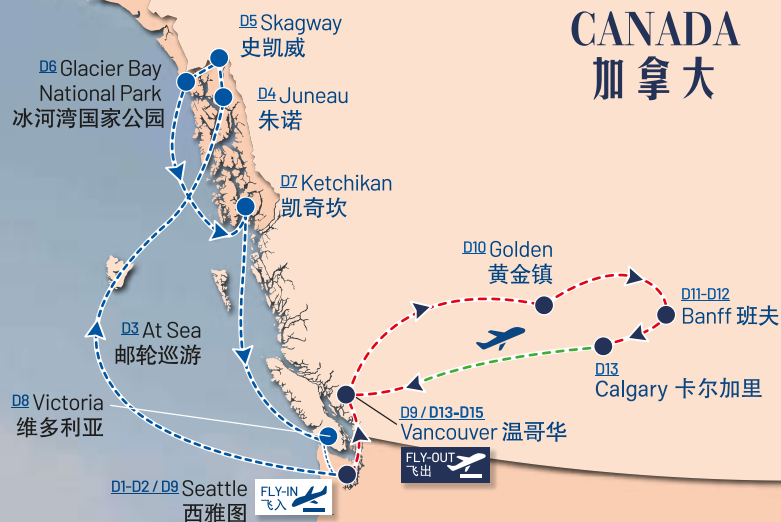
SHIP INFORMATION 邮轮资料

Passenger Capacity 载客量	: 3,560 pax
Guest Cabin 舱房数量	: 1,780
Length 总长度	: 1,083 ft.
Gross Tonnage 总吨位	: 142,229
Inaugural Cruise 首航年份	: 2013, refurbished on 2018
Number of Decks 层数	: 19 Decks



CANADA
加拿大

UNITED STATES
美国



CRUISE CABIN TYPE



Balcony Stateroom
阳台舱房

Extraordinary Features That Offer The Perfect Experience At Sea In Every Season!

非凡的功能，在每个季节提供完美的海上体验！



ITINERARY



Seattle city view



Juneau Port



Totem Park

DAY 01

MOB

KUALA LUMPUR → TAIPEI → SEATTLE

Depart for Seattle via Taipei. Upon arrival, meet & greet by local guide and transfer hotel for check-in by private charter coach.

 Hilton Seattle Airport Hotel or similar

DAY 02

B/Meal On Cruise

SEATTLE CITY TOUR - CRUISE TERMINAL - BOARDING

Pike Place Market - is a public market. Opened on August 17, 1907, and is one of the oldest continuously operated public farmers' markets in the United States.

Flying Fish Show - Tradition Way on how to handle the fish after you bought it, bringing entertainment to the market.

First Starbucks Coffee Shop - The first Starbucks store, established in 1971 at Pike Place Market.

Gum Wall - The Gum Wall is a brick wall covered in used chewing gum under Pike Place Market.

Seattle Centre / Space Needle - photo stop in this Iconic tower, 605-ft.-tall spire at the Seattle Center, with an observation deck and restaurant.


Transfer to Pier 91 cruise terminal for embarkation.

 Overnight on cruise

DAY 03

Meal On Cruise

CRUISING AT SEA

Feel free to enjoy on cruise facilities.  Overnight on cruise

DAY 04

Meal On Cruise

JUNEAU, ALASKA (0100pm-0900pm)

Juneau, the capital of Alaska, nestled between stunning glaciers and rugged mountains, offers a wealth of outdoor activities, captivating cultural landmarks, and unique opportunities for wildlife viewing.

 • Juneau Shore Excursions
• King Crab Tasting

 Overnight on cruise

DAY 05

Meal On Cruise

SKAGWAY, ALASKA (0700am-0830pm)

Skagway, a historic Alaskan town nestled in breathtaking natural beauty, captivates visitors with its rich Gold Rush heritage and scenic wonders.



• Skagway Shore Excursions



Overnight on cruise



Glacier Bay National Park

DAY 06

Meal On Cruise

GLACIER BAY NATIONAL PARK (SCENIC CRUISING) (0600am-0300pm)

The breathtaking national park and preserve boasts some of the world's most spectacular tidewater glacier, such as Margerie Glacier, which often drops colossal chunks of ice into the sea.

 Overnight on cruise

DAY 07

Meal On Cruise

KETCHIKAN, ALASKA (0700am-0100pm)

Ketchikan is a charming city in Alaska, renowned for its rich Native American culture, stunning fjords, and abundant wildlife.



• Skagway Shore Excursions

 Overnight on cruise

DAY 08

Meal On Cruise

VICTORIA, CANADA (0900pm-1159pm)

Victoria, a charming city in Canada, is known for its captivating British architecture, beautiful gardens and rich cultural events.

Feel free to do own shore excursions or enjoy facilities on cruise.

 Overnight on cruise



DAY 09

Meal On Cruise/L/D

DISEMBARKATION AT SEATTLE (0700am Docked) VANCOUVER

VANCOUVER CITY TOUR

Gastown / Steam Clock - This is the area's world-famous steam clock. Built in 1977, the clock is one of only a few steam clocks in the world.

Canada Place/ New Convention Centre (Pass by) - One of the exhibition hall in 1986 Expo. Now is Cruise Terminal and site of a 5 star hotel.

Stanley Park - a magnificent green oasis in the midst of the urban landscape of Vancouver.

Totem Park - the colorful Totems represent the culture of Native Indians.



Hilton Vancouver Airport Hotel or similar

DAY 10

B/L/D

VANCOUVER - KAMLOOPS - GOLDEN

Town of Hope - located in Frazer River Valley. Rambo's first movie "First Blood" was filmed there in 1981.

Ginseng Factory - located in the Canadian capital of Kamloops, where the factory welcomes customers to visit, learn, and explore the know of Ginseng.

Last Spike - a historical landmark for the completion of the Canadian Pacific Railway dated back in 1885 Nov 7th.

Revelstoke National Park - Located in the province of British Columbia, Canada, it is renowned for its magnificent natural landscapes and rich wildlife.

Rogers Pass - the only way passing through the Columbia Mountains with record snow fall of 70 feet in a winter.



Prestige Golden Hotel or Similar



Glacier Bay Skywalk

DAY 11

B/L/D

GOLDEN - YOHO NATIONAL PARK - BANFF

Yoho National Park - one of the five National Parks in Canadian Rockies with an area of 1,313 sq.km. Features 28 mountain peaks each above 3,000 meters.

Emerald Lake - is one of the Canadian Rockies' finest lakes and a resplendent place to visit in British Columbia.

Natural Bridge - is a rock formation that spans a small but powerful waterfall on the Kicking Horse River in Yoho National Park.

Lake Louise - the nearby lake, framed by mountains and is one of the most famous mountain vistas in the world.

Moraine Lake (Open in Season) - one of the most famous lakes in Canada, it's a glacier-fed lake and the view of the ten peak mountains surround the lake.

Bow Falls - the 1954 film "River of No Return", starring Marilyn Monroe, a Hollywood star who was popular all over the world.

Banff Sulphur Mt. Gondola - where to see the majestic Rocky Mountains 360 degrees.

 **Hotel Canoe & Suite or Similar**

Banff National Park



Columbia Ice Field

DAY 12

B/L/D

BANFF- COLUMBIA ICEFIELD - BANFF

Icefield Parkway - listed as one of the most scenic roads in the world.

Crowfoot Glacier - The Icefields Parkway in Alberta, Canada, is named for its resemblance to a crow's foot.

Bow Lake - sits at an elevation of 1,920 meters and spends most of the year locked away in ice.

Peyto Lake (Open in Season) - One of the most famous lakes in Banff National Park.

Columbia Icefield Centre

Ice Explorer Ride - take a ride on Ice Explorer drive down on top Athabasca Glacier.

Glacier Sky Walk - a thrilling experience walking across the Glass-Floor bridge overlooking Sunwapta Valley 918 feet underneath your feet.

 **Hotel Canoe & Suites or similar**



Natural Bridge

DAY 13

B/L/D

BANFF - CALGARY → VANCOUVER

Calgary - Oil Capital of Canada.

After lunch, transfer to Calgary airport and fly back to Vancouver.

Robson Street & Pacific Centre - located in downtown, it is a renowned shopping and entertainment thoroughfare.

 **Hyatt Regency Vancouver Downtown Hotel or Similar**



Bow Falls



Banff Sulphur Mt. Gondola

DAY 14

B/L/D

WINE TASTING – McArthur GLEN PREMIUM OUTLET – AIRPORT

Free and easy until check out.

After lunch, visit **Lulu Island Winery** for Ice-wine tasting. Then, transfer to **McArthur Glen Premium Outlet** for shopping. After enjoying a **Live King Crab Seafood Dinner**, proceed to **Vancouver International Airport** for check-in and fly back home sweet home.

DAY 15

MOB

VANCOUVER → TAIPEI

DAY 16

MOB

TAIPEI → KUALA LUMPUR

Disclaimer: Due to some travel restrictions, local / religious festivals, public holidays, weather condition, transport technical issue, acts of nature, Golden Destinations reserved the rights to alter the sequence or change, amend or alter the itinerary, if necessary, with or without prior notice.

Remark: There will be no refund or replacement if the tour logistic affected by the above issue. All pictures are for illustration purpose only. Itinerary for all ground tours are subject to final confirmation.



Crowfoot Glacier

GENERAL INFORMATION

ALASKA / USA / CANADA



<div>EXCHANGE RATE/ CURRENCY 货币/汇率</div> <div></div>	<div>Canada 加拿大</div> <div>United States 美国</div> <div>Cruise 邮轮</div>	<div>Canadian Dollar (CAD) 加币</div> <div>United States Dollar (USD) 美金</div> <div>United States Dollar (USD) 美金</div>
<div>TELEPHONE CODE 拨号代码</div> <div></div>	<div>Canada 加拿大</div> <div>United States 美国</div>	<div>00+1 250+ Local Number 当地号码</div> <div>00+1 360+ Local Number 当地号码</div>
<div>TIME ZONE 时差</div> <div></div>	<div>Canada 加拿大</div> <div>United States 美国</div>	<div>15 hour behind of Malaysia 标准时差慢马来西亚15小时</div> <div>16 hour behind of Malaysia 标准时差慢马来西亚16小时</div>
<div>WEATHER 气候</div> <div></div>	<div>Alaska 阿拉斯加</div> <div>Seattle 西雅图</div> <div>Vancouver 温哥华</div>	<div>18 °C - 3 °C (May - Sep)</div> <div>26 °C - 8 °C (May - Sep)</div> <div>23 °C - 8 °C (May - Sep)</div> <div>Banff 班夫</div> <div>Jasper 贾斯珀</div> <div>18 °C - 3 °C (May - Sep)</div> <div>26 °C - 8 °C (May - Sep)</div>
<div>FLIGHT 航空</div>	<div></div>	

YOUR TRAVEL AGENT



Visit our website at www.goldendestinations.com